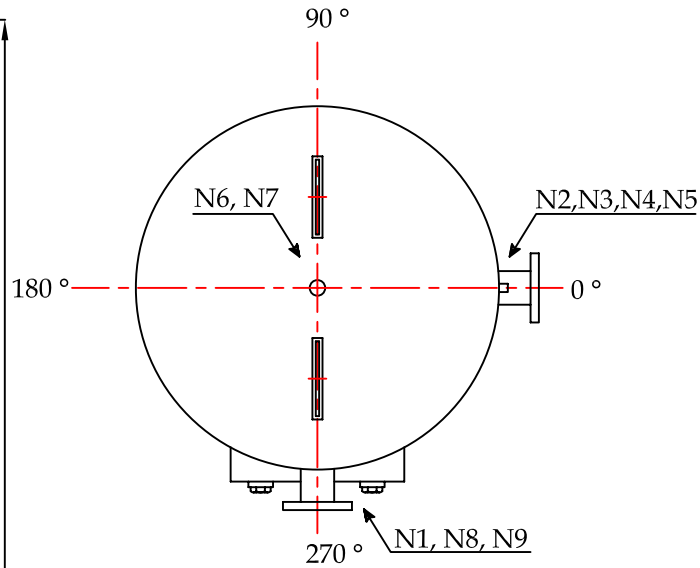


FRONT VIEW



TOP VIEW

DESIGN DATA

CAPACITY AIR VOLUME	2500 LITRES	
NUMBER OF UNITS	1	
PRESSURE DESIGN	10 BAR.g (150PSI.g)	
HYDROSTATIC TEST	15 BAR.g (225PSI.g)	
APPROX. WEIGHT	670 Kg	
MATERIAL	SS 400 x 8 mm.thk.	
PAINT	- INTERNAL SURFACE	COAL TAR EPOXY
	- EXTERNAL PRIMER	RED OXIDE
	- EXTERNAL SURFACE	TOA G-370

LONGITUDINAL & CIRCUMFERENTIAL WELDING

INSIDE	ELECTRICAL WELDING 4 mm.
	YAWATA L-55 (AWS.E-7016)
OUTSIDE	FULLY AUTOMATIC WELDING (SAW)
	FLUX LINCOLN # 860
	WIRE LINCOLN L-61 (AWS EM 22K)
NOZZLE AND OTHERS	SHIELD METAL ARC WELDING (SMAW)
	YAWATA L-55 (AWS.E-7016)

NOZZIE LIST

ITEM NO.	SERVICE	SIZE	QTY	CONNECTION
N1	AIR OUTLET	Ø 2 ½ "	1	FLANGE JIS 10 K
N2	SAFETY VALVE	Ø 1 "	1	Socket BSW
N3	PRESSURE GAUGE	Ø ½ "	1	Socket BSW
N4	AIR REGULATION NOZZLE	Ø ½ "	1	Socket BSW
N5	AIR INLET	Ø 2 ½ "	1	FLANGE JIS 10 K
N6	DRAIN	Ø 1 "	1	Socket BSW
N7	HYDRO TEST NOZZLE	Ø 1 "	1	Socket BSW
N8	MAN HOLE	12"x14"	1	
N9	NAME PLATE			

AIR RECEIVER TANK CAPACITY 2500/8 LTRS

CUSTOMER		DATE	04/04/2011
DRAW BY		REV	0
APPROVED			