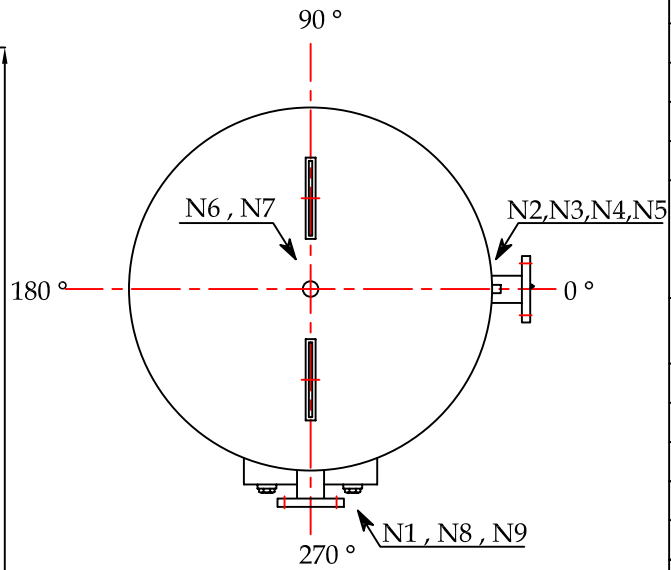


FRONT VIEW



TOP VIEW

DESIGN DATA

| | | |
|---------------------|---------------------|----------------|
| CAPACITY AIR VOLUME | 2000 LITRES | |
| NUMBER OF UNITS | 1 | |
| PRESSURE DESIGN | 10 BAR.g (150PSI.g) | |
| HYDROSTATIC TEST | 15 BAR.g (225PSI.g) | |
| APPROX. WEIGHT | 550 Kg | |
| MATERIAL | SS 400 x 8 mm.thk. | |
| PAINT | - INTERNAL SURFACE | COAL TAR EPOXY |
| | - EXTERNAL PRIMER | RED OXIDE |
| | - EXTERNAL SURFACE | TOA G-370 |

LONGITUDINAL & CIRCUMFERENTIAL WELDING

| | |
|-------------------|---------------------------------|
| INSIDE | ELECTRICAL WELDING 4 mm. |
| | YAWATA L - 55 (AWS.E-7016) |
| OUTSIDE | FULLY AUTOMATIC WELDING (SAW) |
| | FLUX LINCOLN # 860 |
| | WIRE LINCOLN L-61 (AWS EM 22K) |
| NOZZLE AND OTHERS | SHIELD METAL ARC WELDING (SMAW) |
| | YAWATA L - 55 (AWS.E-7016) |

NOZZIE LIST

| ITEM NO. | SERVICE | SIZE | QTY | CONNECTION |
|----------|-----------------------|---------|-----|-----------------|
| N1 | AIR OUTLET | Ø 2 " | 1 | FLANGE JIS 10 K |
| N2 | SAFETY VALVE | Ø 1 " | 1 | Socket BSW |
| N3 | PRESSURE GAUGE | Ø ½ " | 1 | Socket BSW |
| N4 | AIR REGULATION NOZZLE | Ø ½ " | 1 | Socket BSW |
| N5 | AIR INLET | Ø 2 " | 1 | FLANGE JIS 10 K |
| N6 | DRAIN | Ø 1 " | 1 | Socket BSW |
| N7 | HYDRO TEST NOZZLE | Ø 1 " | 1 | Socket BSW |
| N8 | MAN HOLE | 12"x14" | 1 | |
| N9 | NAME PLATE | | | |

AIR RECEIVER TANK CAPACITY 2000/8 LTRS

| | | | |
|----------|--|------|------------|
| CUSTOMER | | DATE | 04/04/2011 |
| DRAW BY | | REV | 0 |
| APPROVED | | | |